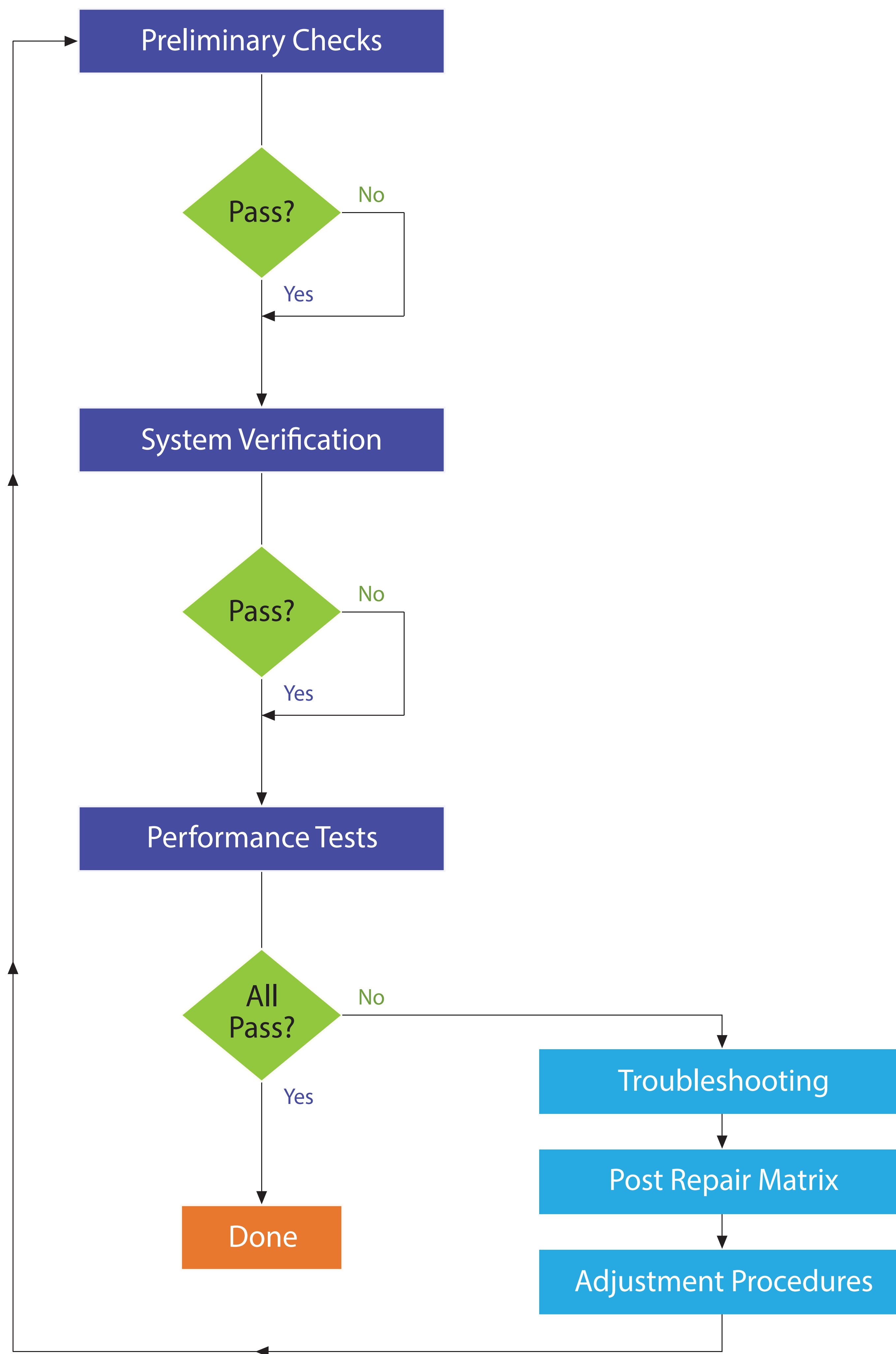


Test Path Verification Flowchart



ANSI/NCSL Z540-1-1994 Verification

This type of verification consists of conducting the preliminary checks, system verification, and the performance tests *without stopping to troubleshoot*. Exceptions will only be made in case of catastrophic failure or cable connector damage. In order to obtain data of how the analyzer was performing at the time of verification, these tests must be done even if you are aware that the analyzer will not pass. Obtaining the data (system verification printout and performance test record) at this point is necessary so that you will understand that your measurements may not have been accurate. You must wait until after the ANSI/NCSL Z540-1-1994 verification is complete before troubleshooting and repairing any problems.